



Chrysler Hall

City Council Retreat
November 27, 2023

Chrysler Hall Improvements Project Goals

The overarching goal of the project is to re-imagine the Chrysler-Scope Complex as a modernized icon that will represent the City of Norfolk as the uncontested leader of arts and culture in the region.

Elevate Patron Experience

Respect Historic Significance

Modernize Back of House



Proposed Design Improvements

New Charlotte St. Accessible Ramp, Stairs, and Street Improvements

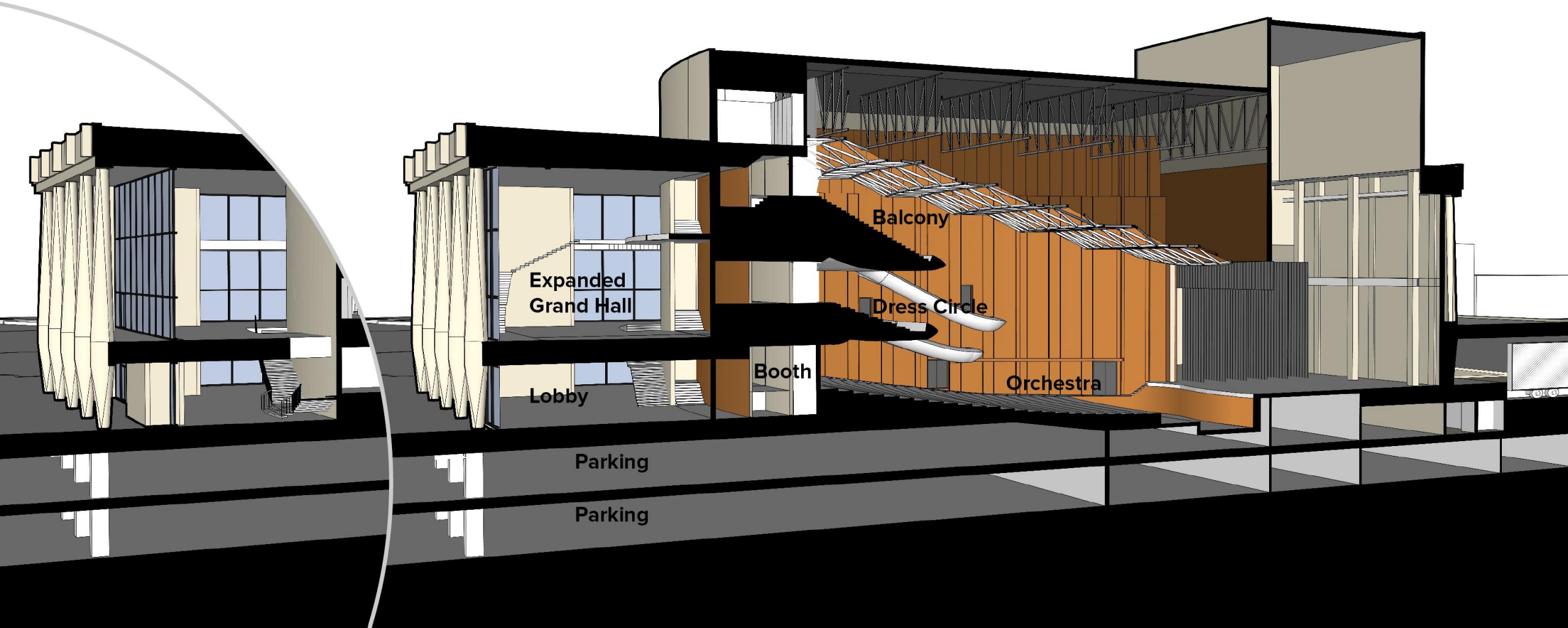


Proposed Design Improvements

Expanded Lobbies w/ New Glass Wall System

Modern Theatre Average
8-12 SF/Person

Expanded Orchestra Lobby
Existing - 5.4 SF/Person
Proposed - 7.4 SF/Person



Proposed Design Improvements

Expanded Front Lobby - All Glass Wall System



Proposed Design Improvements

Improved Seating Access



Proposed Design Improvements

Improved Seating Access

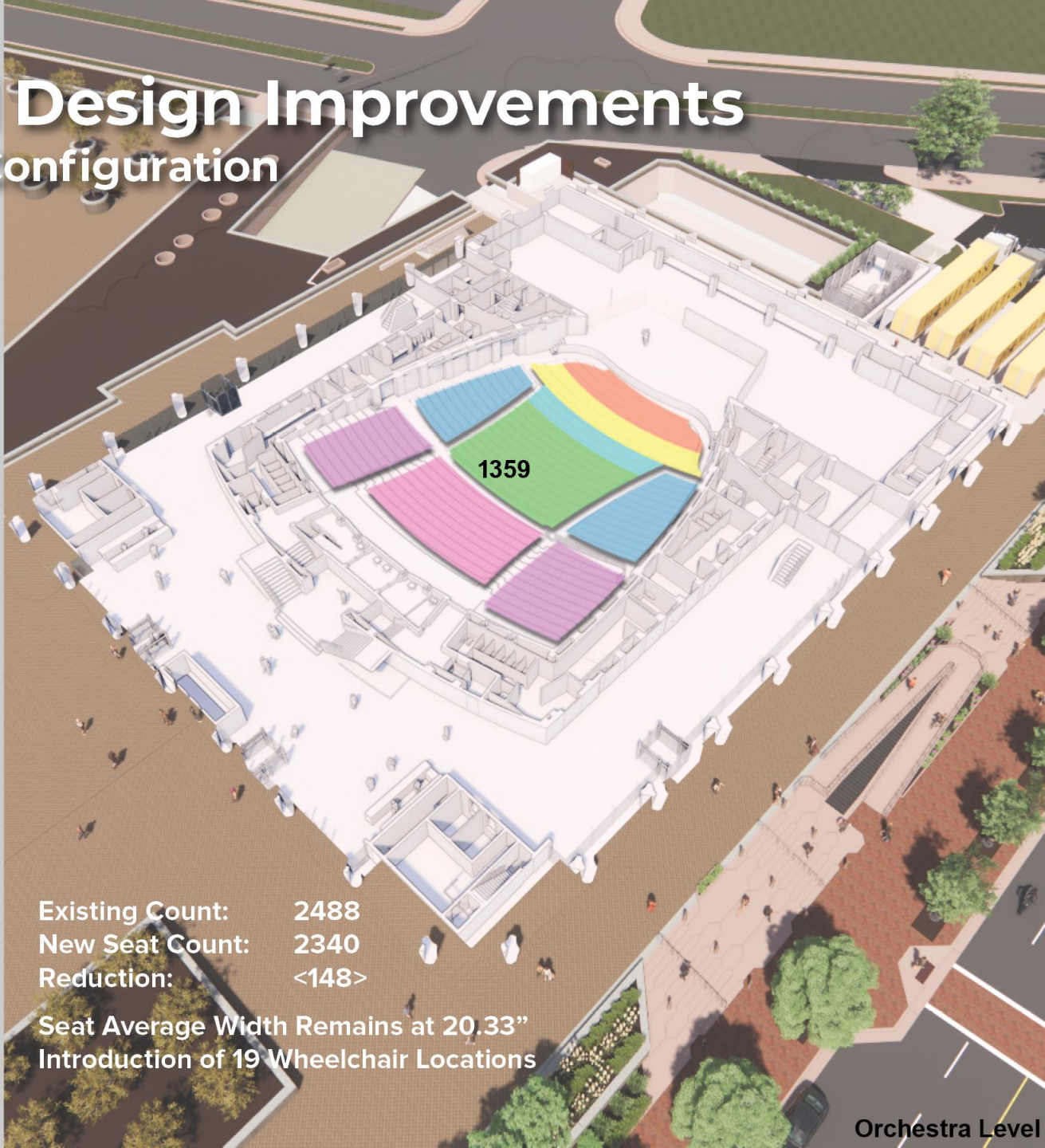
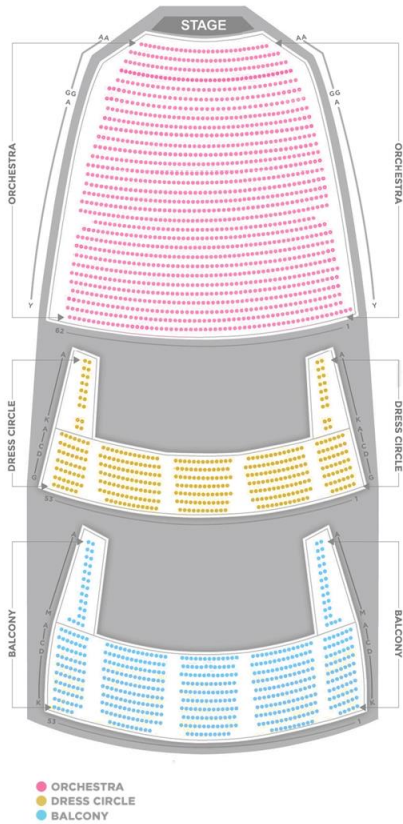
Key

- Primary Traffic Flow
- Accessible Entrances
- Chair Lifts
- Elevators



Proposed Design Improvements

New Seating Configuration



Existing Count: 2488
 New Seat Count: 2340
 Reduction: <148>

Seat Average Width Remains at 20.33"
 Introduction of 19 Wheelchair Locations



Dress Circle Level



Balcony Level

Orchestra Level

Proposed Design Improvements

Restroom Expansion and Distribution - All Levels

Key
Women's Restrooms
Men's Restrooms



Orchestra Level



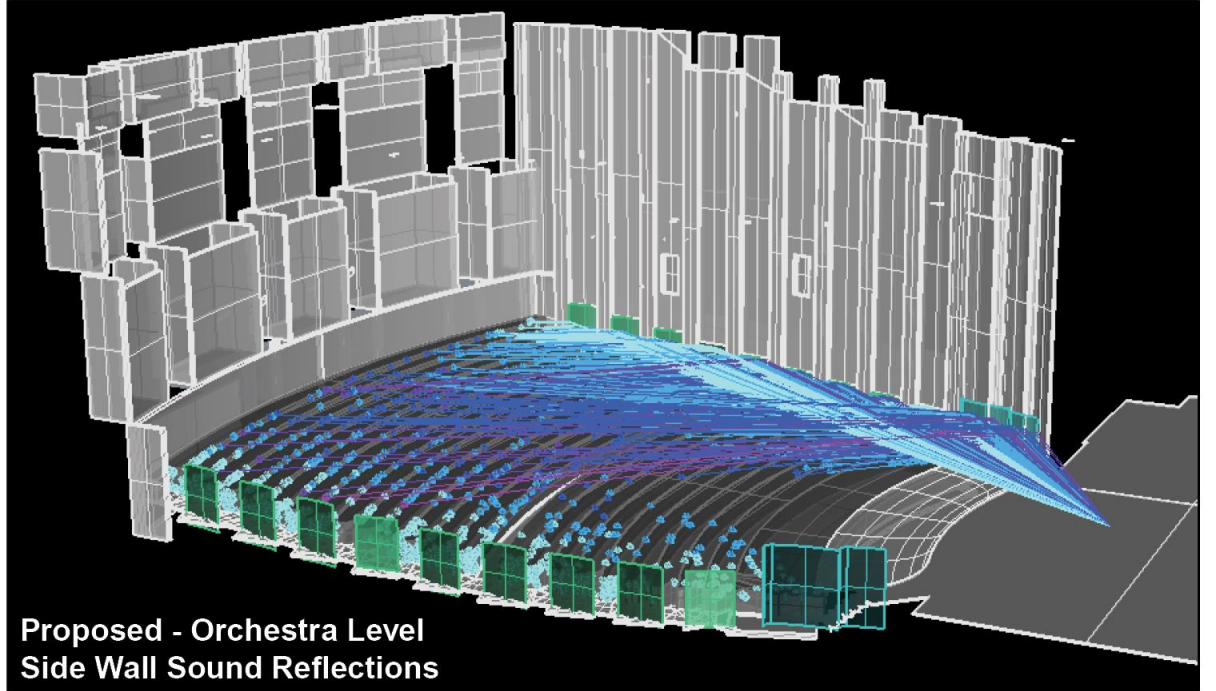
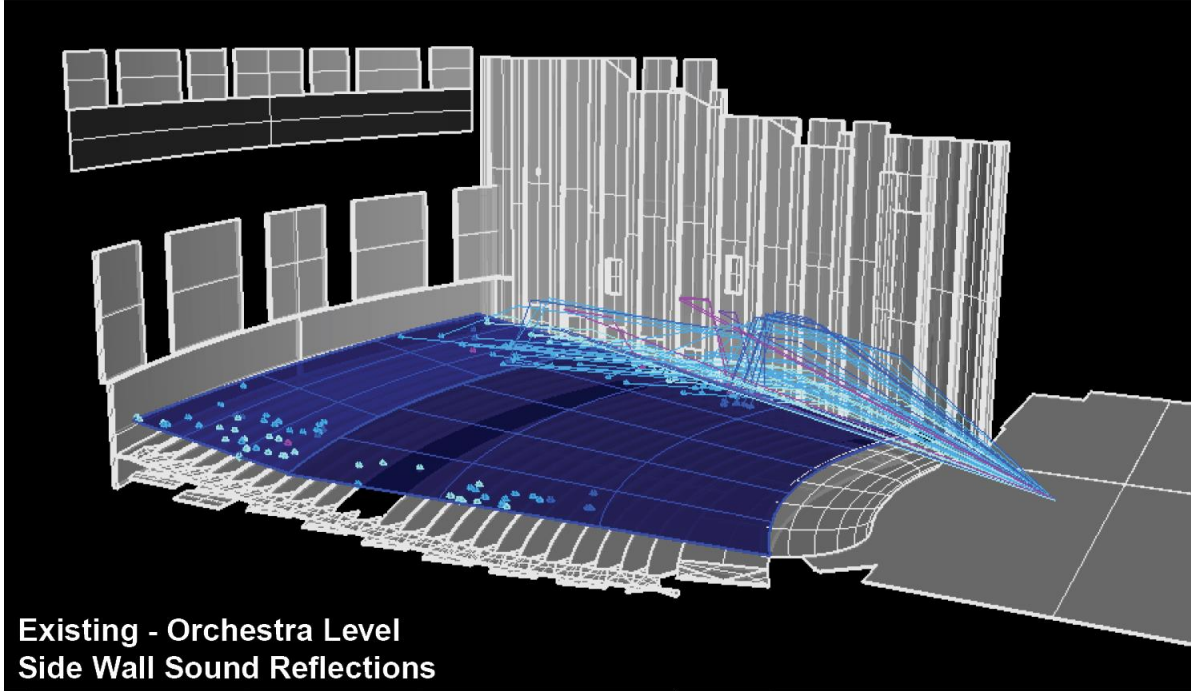
Dress Circle Level



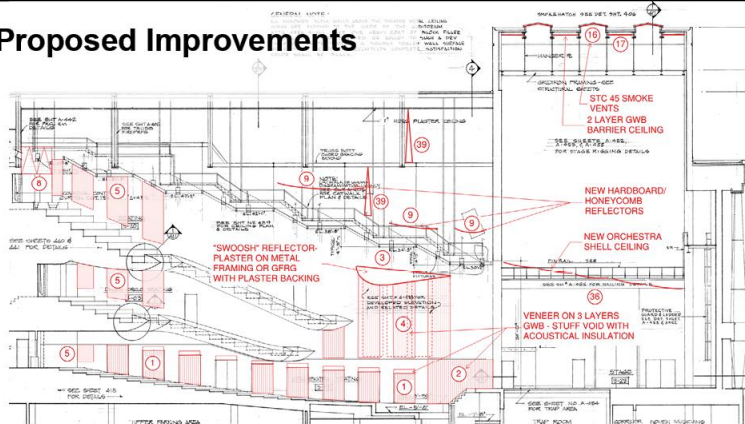
Balcony Level

Proposed Design Improvements

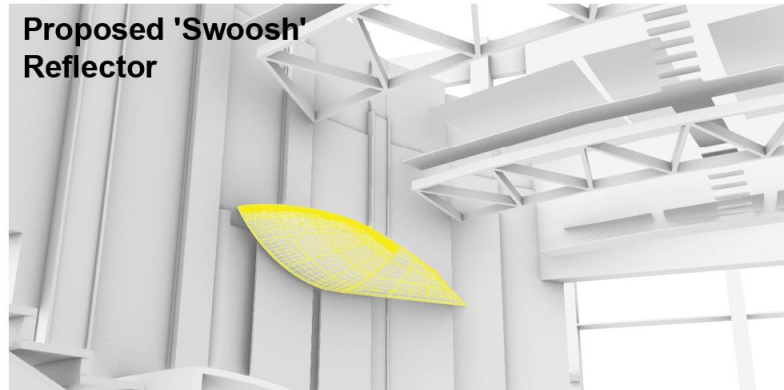
Full Theatre, Acoustics, Lighting, Rigging + Stage improvements



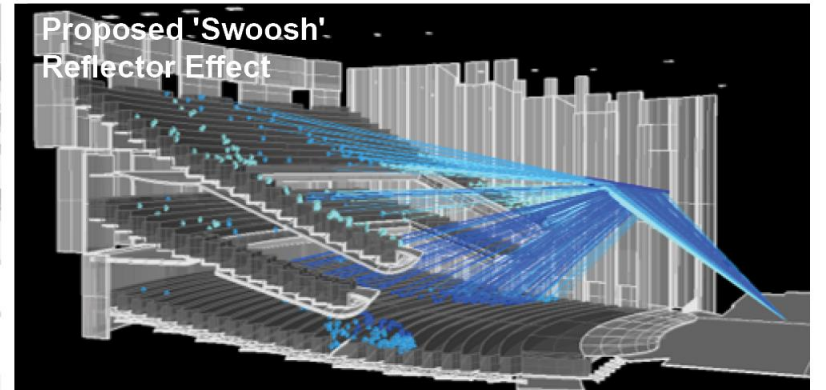
Proposed Improvements



Proposed 'Swoosh' Reflector

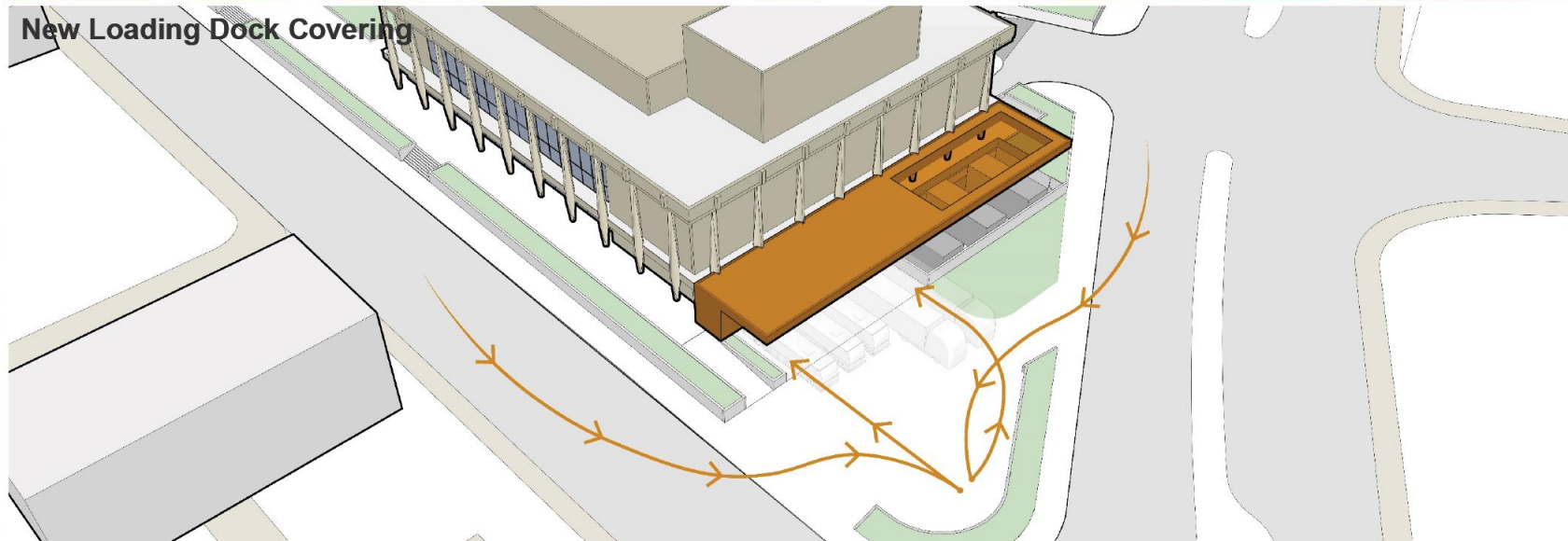
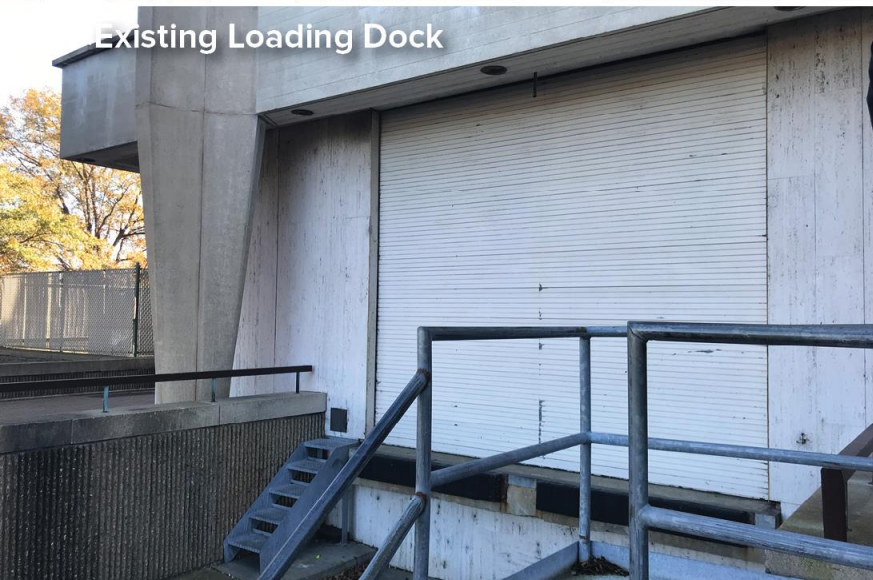
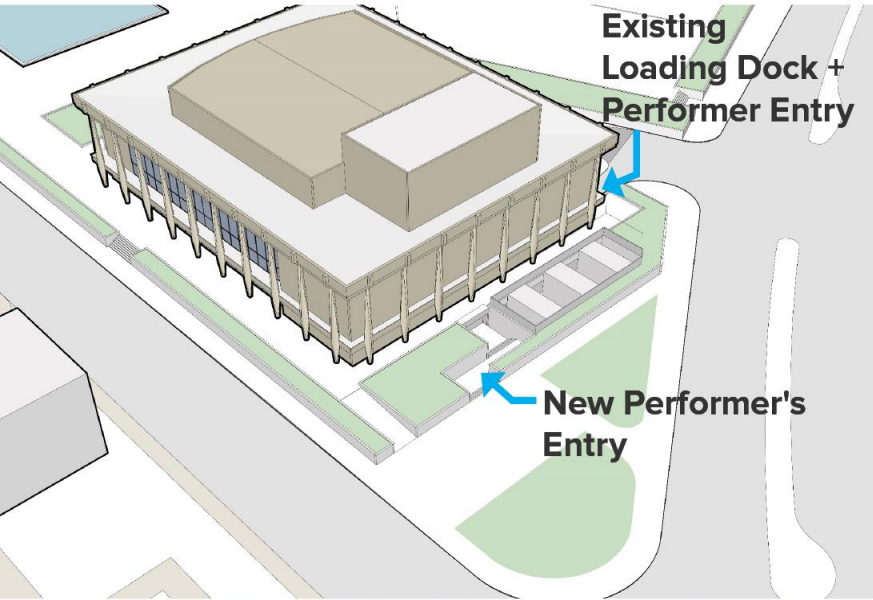


Proposed 'Swoosh' Reflector Effect



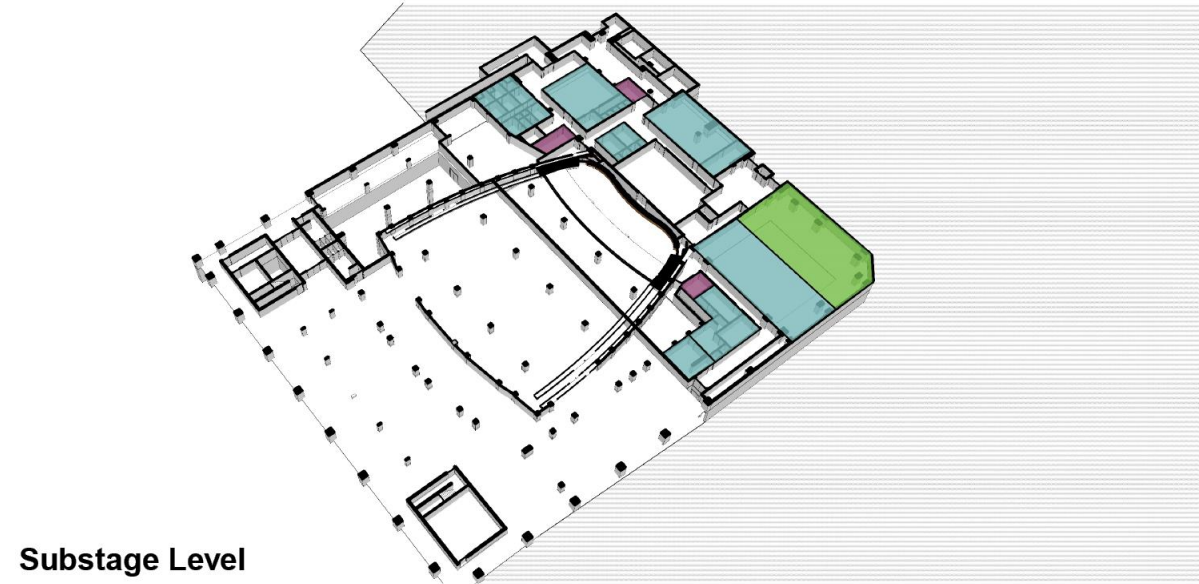
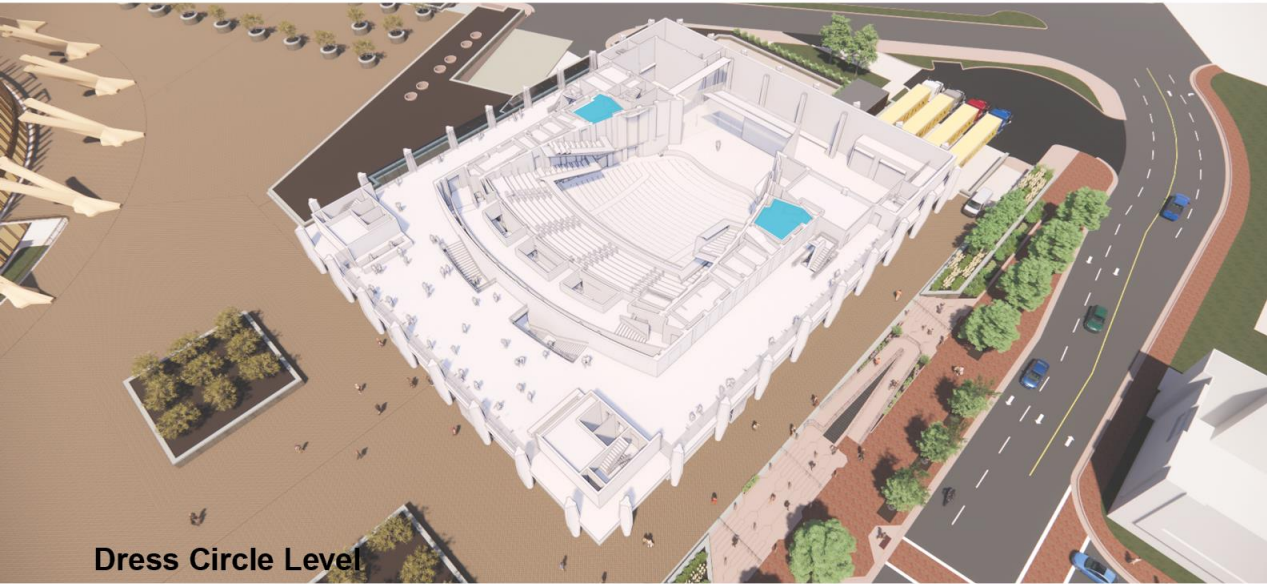
Proposed Design Improvements

Loading Dock Expansion + Roof Covering and Performer + Catering Entry



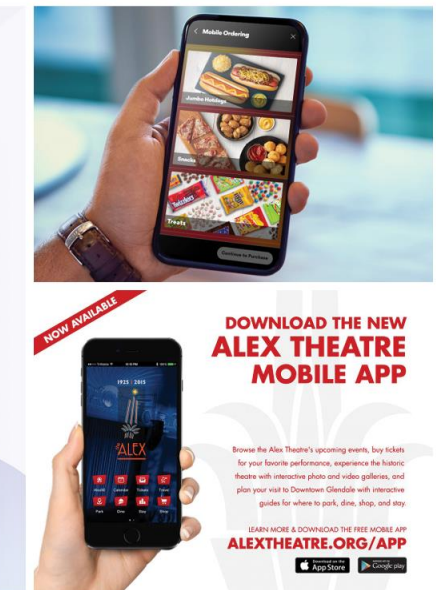
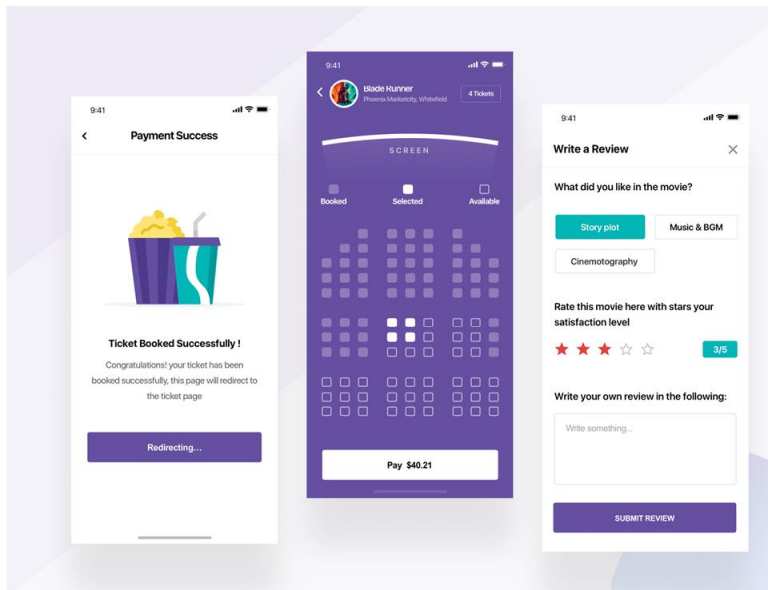
Proposed Design Improvements

Refresh Orchestra level, Sub-Stage, and Basement Performer Support Spaces



Proposed Design Improvements

New and Improved Building Systems



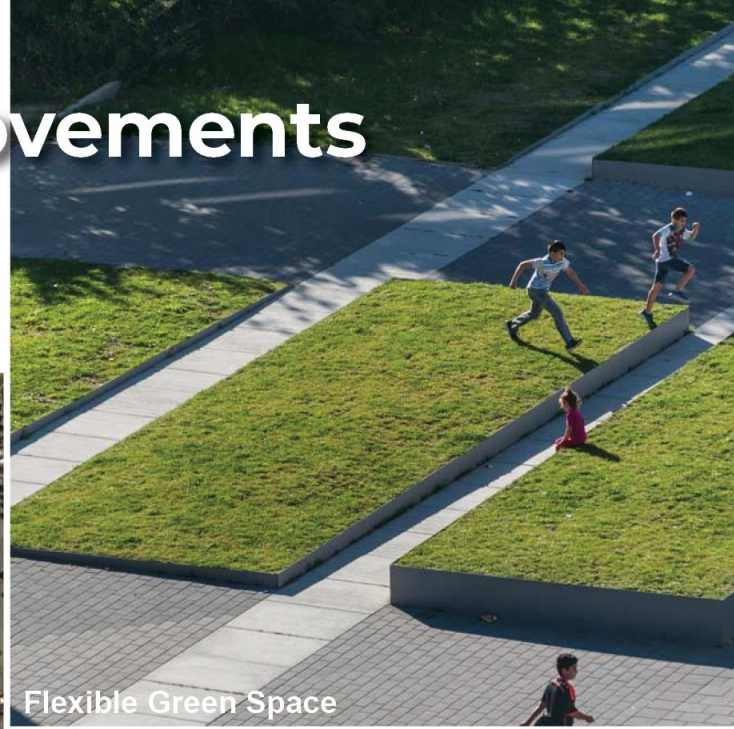
Proposed Design Improvements

Re-Roofing + Smoke Evacuation



Proposed Design Improvements

Plaza Improvements



Flexible Green Space



Site Lighting



Chrysler Hall Improvements - Budget

- Estimated Cost – April 2020: \$70,000,000
- COVID + Market Escalation: \$27,000,000
 - *Source ENR and AGC Virginia Confirmed Percentages of 38% since 2020 for local region*
- Current Anticipated Costs: \$97,000,000

Chrysler Hall Improvements - Schedule

- Project Startup, Scoping, and Design - 12 Months
- Permitting, Construction Contract, and Submittals - 6 Months
- Construction - 15 Months

Construction must commence based on Seven Venues Broadway schedule to limit shutdown time to a single 'dark' season. Construction to commence in June and continue through September of the following year.